

English

326  
IO

## IMPORTANT SAFETY RULES

Read, understand, and follow all instructions carefully before installing and using this product. Keep for future reference.

**POOL DRAIN PUMP**  
**Model DP30220**  
**220 - 240V~, 50Hz, 99W**  
**Hmax 2.5 m, Hmin 0.01 m, IPX8**



For illustrative purposes only.

Don't forget to try these other fine Intex products: pools, pool accessories, inflatable pools and in-home toys, airbeds and boats available at fine retailers or visit our website.

Due to a policy of continuous product improvement, Intex reserves the right to change specifications and appearance, which may result in updates to the instruction manual without notice.

OWNER'S MANUAL

**INTEX®**

©2024 Intex Marketing Ltd. - Intex Development Co. Ltd. - Intex Recreation Corp. All rights reserved/Tous droits réservés/Todos los derechos reservados/Alle Rechte vorbehalten. Printed in China/Imprimé en Chine/Impreso en China/Gedruckt in China.

®™ Trademarks used in some countries of the world under license from®™ Marques utilisées dans certains pays sous licence de/Marcas registradas utilizadas en algunos países del mundo bajo licencia de/Warenzeichen verwendet in einigen Ländern der Welt in Lizenz von/Intex Marketing Ltd. to/à/a/an Intex Development Co. Ltd., Hong Kong & Intex Recreation Corp., P.O. Box 1440, Long Beach, CA 90801 - Distributed in the European Union by/Distribué dans l'Union Européenne par/Distribuido en la unión Europea por/Vertrieb in der Europäischen Union durch/Intex Trading B.V., Ettenseweg 46, 4706 PB Roosendaal - The Netherlands - Distributed in the UK by Unisex Service (UK) Limited, 21 Holborn Viaduct, London EC1A 2DY, UK.

www.intexcorp.com

326-IO-R1-2412

## TABLE OF CONTENTS

<b>Warnings.....</b>	<b>3-4</b>
<b>Parts Reference.....</b>	<b>5</b>
<b>Setup Instructions.....</b>	<b>5</b>
<b>Troubleshooting Guide.....</b>	<b>6</b>
<b>Long Term Storage.....</b>	<b>6</b>
<b>Limited Warranty.....</b>	<b>7</b>

**SAVE THESE INSTRUCTIONS**

Page 2

# IMPORTANT SAFETY RULES

326  
IO

Read, Understand and Follow All Instructions Carefully Before Installing and Using this Product.



## WARNING

- Always supervise children and those with disabilities.
- Children must stay away from this product and electrical cord(s).
- Children shall not play with the appliance. Cleaning and user maintenance must be performed by an adult above 18 years old who is familiar with the risk of electric shock.
- This appliance shall not be used by children. Cleaning and user maintenance shall not be carried out by children.
- This appliance can be used by persons with reduced physical, sensory or mental capabilities or lack of experience and knowledge if they have been given supervision or instruction concerning use of the appliance in a safe way and understand the hazards involved.
- Assembly and disassembly by adults only.
- Risk of electric shock. Connect this product only to a grounding type receptacle protected by a ground-fault circuit interrupter (GFCI) or residual current device (RCD). Contact a qualified electrician if you cannot verify that the receptacle is protected by a GFCI/RCD. Use a qualified electrician to install the GFCI/RCD, which has a maximum rate of 30mA. Do not use a portable residual current device (PRCD).
- Always unplug this product from the electrical outlet before removing, cleaning, servicing or making any adjustment to the product.
- The plug must be accessible after product is installed.
- Do not bury the electrical cord. Locate the cord where it will not be damaged by lawn mowers, hedge trimmers and other equipment.
- The supply cord cannot be replaced. If the cord is damaged the appliance should be scrapped.
- To reduce the risk of electric shock, do not use extension cords, timers, plug adaptors or converter plugs to connect unit to electric supply; provide a properly located outlet.

## SAVE THESE INSTRUCTIONS

# IMPORTANT SAFETY RULES

326  
IO

Read, Understand and Follow All Instructions Carefully Before Installing and Using this Product.



## WARNING

- Do not attempt to plug in or unplug this product while standing in water or when your hands are wet.
- Keep the plug of this product more than 3.5m away from the pool.
- Do not operate this product when the pool is occupied.
- This product is for use with storable pools only. Do not use with permanently installed pools. A storable pool is constructed so that it may be readily disassembled for storage and reassembled to its original configuration.
- The appliance is intended only for household use.
- This product is intended to be used only for the purposes described in the manual!

**FAILURE TO FOLLOW THESE WARNINGS MAY RESULT IN PROPERTY DAMAGE, ELECTRIC SHOCK, ENTANGLEMENT OR OTHER SERIOUS INJURY OR DEATH.**

These product warnings, instructions and safety rules provided with the product represent some common risks of water recreation devices and do not cover all instances of risk and danger. Please use common sense and good judgement when enjoying any water activity.

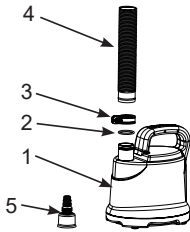
## CAUTION

In order to avoid a hazard due to inadvertent resetting of the thermal cut-out, this appliance must not be supplied through an external switching device, such as a timer, or connected to a circuit that is regularly switched on and off by the utility.

**SAVE THESE INSTRUCTIONS**

## PARTS REFERENCE

Before assembling your product, please take a few minutes to check the contents and become familiar with all the parts.

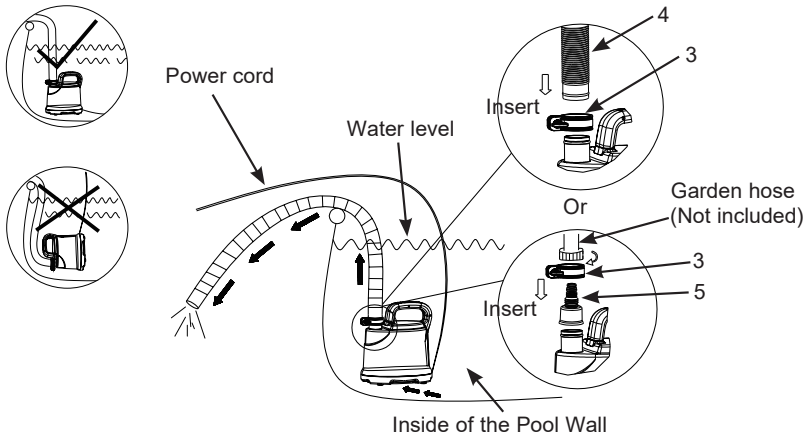


REF. NO.	DESCRIPTION	QTY.	SPARE PARTS NO.
1	POOL DRAIN PUMP	1	12666
2	HOSE SEAL	1	10134
3	HOSE CLAMP	1	11489
4	HOSE (32mm X 5m)	1	12656
5	GARDEN HOSE ADAPTOR	1	12668

**NOTE:** Drawings for illustration purpose only. Actual product may vary. Not to scale.

When ordering parts, be sure to quote the model number and part numbers. No tools are required for the assembly.

## SETUP INSTRUCTIONS



**NOTE:** Maximum pool **water depth** not to exceed 48 in (1.22 m). To protect the pump motor from running dry, disconnect the power cord from the electrical outlet once the water has been drained out or when the remaining water is below the drainage pump base.

# SAVE THESE INSTRUCTIONS

## TROUBLESHOOTING GUIDE

TROUBLE	CAUSE	SOLUTION
PUMP MOTOR FAILS TO START	<ul style="list-style-type: none"> <li>• The drainage pump is not plugged in.</li> <li>• The GFCI power outlet socket is tripped.</li> <li>• The main household circuit breaker is tripped.</li> <li>• Pump motor too hot and overload protection is activated.</li> </ul>	<ul style="list-style-type: none"> <li>• Make sure the unit is plugged in.</li> <li>• Reset the GFCI power outlet socket. If problem persist, contact a qualified electrician to check the outlet socket.</li> <li>• Reset the main circuit breaker. If problem persist, contact a qualified electrician to find out and fix the electrical fault.</li> <li>• Do not dry run the pump; let the motor cool down for 30 minutes.</li> </ul>
DOES NOT PUMP WATER OR THE WATER FLOW IS VERY SLOW	<ul style="list-style-type: none"> <li>• Air trapped in the pump and hose.</li> <li>• Debris clogged underneath drainage pump base.</li> <li>• Pool water too dirty with large debris.</li> <li>• Pump not sitting upright on the bottom of the pool floor.</li> <li>• Water level below the drainage pump base.</li> </ul>	<ul style="list-style-type: none"> <li>• Purge all the air out of the pump and hose.</li> <li>• Clear all the debris underneath the pump base.</li> <li>• Remove large debris and particles from the pool floor and surface first using a skimmer or leaf net, and then drain the pool water.</li> <li>• Keep the pump upright at all times.</li> <li>• Disconnect the power cord from the electrical outlet once the pool water level is below the pump base.</li> </ul>

## LONG TERM STORAGE

This product shall not be left outside during freezing weather conditions as it is not protected against the effect of freezing temperature.

1. Disconnect the power cord from the electrical outlet.
2. Clean and air dry all the accessories and parts thoroughly.
3. Store the unit and accessories in a dry place. The storage's temperature should be controlled, between 32 °F (0 °C) and 104 °F (40 °C) storage location.
4. The original packaging can be used for storage.

# SAVE THESE INSTRUCTIONS

## LIMITED WARRANTY

**326  
IO**

Your POOL DRAIN PUMP has been manufactured using the highest quality materials and workmanship. All Intex products have been inspected and found free of defects prior to leaving the factory. This limited warranty applies only to the POOL DRAIN PUMP and accessories listed below.

This limited warranty is in addition to, and not a substitute for, your legal rights and remedies. To the extent that this warranty is inconsistent with any of your legal rights, they take priority. For example, consumer laws across the European Union provide statutory warranty rights in addition to the coverage you receive from this limited warranty: for information on EU-wide consumer laws, please visit the European Consumer Center website at [http://ec.europa.eu/consumers/ecc/contact\\_en/htm](http://ec.europa.eu/consumers/ecc/contact_en/htm).

The provisions of this limited warranty apply only to the original purchaser and are not transferable. This limited warranty is valid for the period noted below from the date of the initial retail purchase. Keep your original sales receipt with this document, as proof of purchase will be required and must accompany warranty claims or the limited warranty will be invalid.

POOL DRAIN PUMP Warranty – 1 Year

Hoses & Fittings Warranty – 180 days

If you find a manufacturing defect in the POOL DRAIN PUMP during the warranty periods noted above, please contact the appropriate Intex Service Center listed in the separate "Authorized Service Centers" sheet. If the item is returned as directed by the Intex Service Center, the Service Center will inspect the item and determine the validity of the claim. If the item is covered by the provisions of the warranty, the item will be repaired or replaced, with the same or comparable item (at Intex's choice) at no charge to you.

Other than this warranty, and other legal rights in your country, no further warranties are implied. To the extent possibly in your country, in no event shall Intex be liable to you or any third party for direct or consequential damages arising out of the use of your POOL DRAIN PUMP, or Intex or its agents' and employees' actions (including the manufacture of the product). If your country does not allow the exclusion or limitation of incidental or consequential damages, this limitation or exclusion does not apply to you.

You should note that this limited warranty does not apply in the following circumstances:

- If the POOL DRAIN PUMP is subject to negligence, abnormal use or application, accident, improper operation, improper voltage or current contrary to operating instructions, improper maintenance or storage;
- If the POOL DRAIN PUMP is subject to damage by circumstances beyond Intex's control, including but not limited to, ordinary wear and tear and damage caused by exposure to fire, flood, freezing, rain, or other external environmental forces;
- To parts and components not sold by Intex; and/or
- To unauthorized alterations, repairs or disassembly to the POOL DRAIN PUMP by anyone other than Intex Service Center personnel.

The costs associated with the loss of pool water, chemicals or water damage are not covered by this warranty. Injury or damage to any property or person is not covered by this warranty.

Read the owner's manual carefully and follow all instructions regarding proper operation and maintenance of your POOL DRAIN PUMP. Always inspect your product prior to use. This limited warranty will be void if use instructions are not followed.

# SAVE THESE INSTRUCTIONS

Page 7